

Directions for Completing FSA Algebra 1 and Geometry EOC Paper-Based Items

The purpose of this handout is to orient test administrators and students to the types of test items that **may** appear on the paper-based FSA End-of-Course (EOC) assessments. Students will use this handout to practice responding to the item types, not working the sample items for a correct answer, as some items do not have the entire item shown. Students may also access this handout and other resources on the Florida Statewide Assessments Portal (<http://www.fsassessments.org/fsa.html>) to practice on their own.

- 1) For **multiple-choice items**, choose the best answer from the answer choices, and fill in **one** bubble for the correct answer. Fill in the bubble by making a solid mark that completely fills the circle.

Example 1:

What is $\frac{2}{3}$ written as a decimal?

(A) 0.23

(B) 0.6

(C) $0.\overline{6}$

(D) 1.5

- 2) For **multiselect items**, choose more than one correct answer from the answer choices, and fill in the bubble beside each correct answer choice. Multiselect items will always have more than one answer, so be sure to bubble all the correct answers.

Example 2:

Which statements correctly compare two numbers?

(A) $2,059 > 2,095$

(B) $2,095 < 2,059$

(C) $2,059 < 2,095$




(D) $2,095 > 2,059$

(E) $2,059 = 2,095$

3) For **matching items**, you will use the information in the table to provide your answer. You will be required to match the information from each row to the corresponding column or columns. Fill in the bubbles based on the instructions to respond to this item type.

Example 3:

Match each building with the geometric shapes that can be used to model it.

	Cone	Cylinder	Pyramid	Rectangular Prism
	(A)	(B)	(C)	(D)
	(E)	(F)	(G)	(H)
	(I)	(J)	(K)	(L)

- 4) For **editing task items**, choose the correct answer choice to fill in each blank or box in a sentence or sentences. For each blank or box, fill in the bubble before the correct response. If you write your answer in the blank but do not fill in the bubble, your answer will not be scored. Be sure to respond to each of the editing task blanks or boxes in the item.

Example 4A:

Choose the correct equation or phrase to fill in each blank in the paragraph. For each blank, fill in the bubble **before** the equation or phrase that is correct.

The vertices of $\triangle SRT$ are $S(1, 4)$, $R(2, 2)$ and $T(1, 3)$. A reflection across the line _____ [A $x = 4$ B $x = 6$ C $y = -x + 5$ D $y = -x + 6$] and then across the line _____ [A $y = 6$ B $y = 8$ C $y = -x + 10$ D $y = -x + 12$] is the same as a translation of 4 units to the right and 4 units up because the lines are _____ [A congruent B parallel C perpendicular D similar].

Example 4B:

Complete the sentence to describe square $EFGH$. For each box, fill in the bubble before the coordinate or phrase that is correct.

The location of point F could be

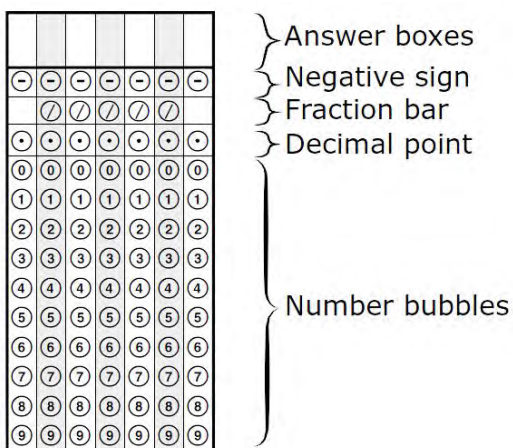
<input type="radio"/> A $(-3, 4)$
<input type="radio"/> B $(-1, 6)$
<input type="radio"/> C $(1, -8)$

because diagonals of a square are congruent and

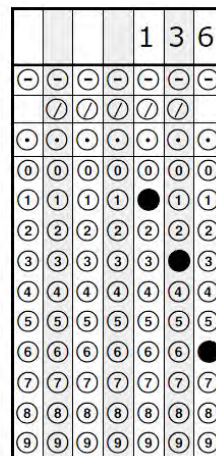
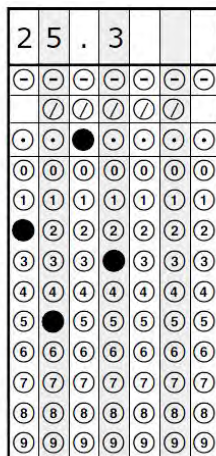
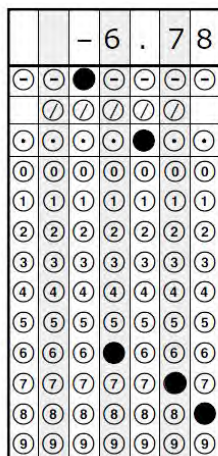
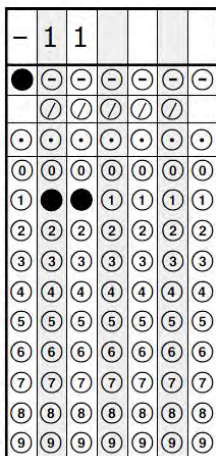
<input type="radio"/> A have the same slope
<input type="radio"/> B bisect each other
<input type="radio"/> C are perpendicular

5) Some items will require you to write your answer in a **response grid** and then fill in the corresponding bubbles. Follow the steps below to complete a response grid:

1. Work the problem and find an answer.
2. Write your answer in the answer boxes at the top of the grid.
 - Write your answer with the first digit in the left answer box OR with the last digit in the right answer box.
 - Write only one digit or symbol in each answer box. Do NOT leave a blank answer box in the middle of an answer.
 - Be sure to write a decimal point, negative sign, or fraction bar in the answer box if it is a part of the answer.
3. Fill in a bubble under each box in which you wrote your answer.
 - Fill in one and ONLY one bubble for each answer box. Do NOT fill in a bubble under an unused answer box.
 - Fill in each bubble by making a solid mark that completely fills the circle.
 - You MUST fill in the bubbles accurately to receive credit for your answer.



When a percent is required to answer a question, do NOT convert the percent to its decimal or fractional equivalent. Grid in the percent value without the % symbol. Do the same with dollar amounts.



Do NOT write a mixed number, such as $13\frac{1}{4}$, in the answer boxes. Change the mixed number to an equivalent fraction, such as $\frac{53}{4}$, or to an equivalent decimal, such as 13.25. Do not try to fill in $13\frac{1}{4}$, as it would be read as $\frac{131}{4}$ and would be counted wrong.

CORRECT

INCORRECT

5	3	/	4		
-	-	-	-	-	-
/	•	/	/	/	
•	•	•	•	•	•
0	0	0	0	0	0
1	1	1	1	1	1
2	2	2	2	2	2
3	•	3	3	3	3
4	4	4	•	4	4
•	5	5	5	5	5
6	6	6	6	6	6
7	7	7	7	7	7
8	8	8	8	8	8
9	9	9	9	9	9

OR

1	3	.	2	5	
-	-	-	-	-	-
/	/	/	/	/	
•	•	•	•	•	•
0	0	0	0	0	0
•	1	1	1	1	1
2	2	2	•	2	2
3	•	3	3	3	3
4	4	4	4	4	4
5	5	5	5	•	5
6	6	6	6	6	6
7	7	7	7	7	7
8	8	8	8	8	8
9	9	9	9	9	9

1	3	1	/	4	
-	-	-	-	-	-
/	/	•	/	/	
•	•	•	•	•	•
0	0	0	0	0	0
•	1	•	1	1	1
2	2	2	2	2	2
3	•	3	3	3	3
4	4	4	•	4	4
5	5	5	5	5	5
6	6	6	6	6	6
7	7	7	7	7	7
8	8	8	8	8	8
9	9	9	9	9	9

Example 5:

An expression is shown.

$$590.92 - 219.38$$

What is the value of the expression?

-	-	-	-	-	-
/	/	/	/	/	
•	•	•	•	•	•
0	0	0	0	0	0
1	1	1	1	1	1
2	2	2	2	2	2
3	3	3	3	3	3
4	4	4	4	4	4
5	5	5	5	5	5
6	6	6	6	6	6
7	7	7	7	7	7
8	8	8	8	8	8
9	9	9	9	9	9

- 6) For **selectable hot text items**, answer choices appear in columns or answer choice boxes. Read the question carefully and fill in the bubble before your answer choice in each column or box to complete the item.

Example 6:

In the table below, select the phrase that represents the independent variable, the phrase that represents the dependent variable, and the equation that represents the graph.

Independent Variable	Dependent Variable	Equation
Ⓐ cost per bushel of corn	Ⓔ cost per bushel of corn	Ⓘ $b = 3.2C$
Ⓑ number of bushels of corn	Ⓕ number of bushels of corn	⓵ $C = 3.2b$
Ⓒ total cost for bushels of corn	Ⓖ total cost for bushels of corn	Ⓚ $b = C + 3.2$
Ⓓ bushels of corn per dollar	Ⓗ bushels of corn per dollar	Ⓛ $C = b + 3.2$

- 7) **Multi-part items** will ask you to respond to two or more related questions. The different parts of the item may be either **multiple-choice** (one answer), **multiselect** (more than one answer), **selectable text** (one or more answers), or **response grids**. Read the item carefully to know how to respond to each question.

Example 7:

Sue removes the plug from a trough to drain the water inside. The volume, in gallons, in the trough after it has been unplugged can be modeled by $4t^2 - 32t + 63$, where t is time, in minutes.

- A.** Select the correct property that will give Sue the amount of time it takes the trough to drain.

- Ⓐ minimum
- Ⓑ maximum
- Ⓒ y -intercept
- Ⓓ zero

- B.** Select the expression that will reveal the property.

- Ⓐ $4(0)^2 - 32(0) + 63$
- Ⓑ $(2t - 7)(2t - 9)$
- Ⓒ $4(t - 4)^2 - 1$
- Ⓓ $4(t - 8)^2 + 47$